

Case Western Reserve University

MANDEL
SCHOOL
OF
APPLIED
SOCIAL SCIENCES

Poverty in Cleveland

An update from the
Center on Urban Poverty and
Community Development

October 2008



CASE WESTERN RESERVE
UNIVERSITY

MANDEL SCHOOL OF APPLIED SOCIAL SCIENCES



Content

What is the relative level of poverty in the Cleveland region?

What factors are responsible for the situation?

What promising strategies are available to address the condition?

How can your corporation get involved?

Prepared by: Center on Urban Poverty and Community Development,
Mandel School of Applied Social Sciences, Case Western Reserve University



City of Cleveland Ranked #2 in Poverty in 2007

Cleveland's 2007 Poverty Rate = 29.5%

Over 1 in 4 Cleveland residents live in poverty

Second highest poverty rate among U.S. cities with 250,000 or more residents

Prepared by: Center on Urban Poverty and Community Development,
Mandel School of Applied Social Sciences, Case Western Reserve University

Definition of Poverty

How the U.S. Census Bureau measures poverty:

- Family income
- Number of persons in family
- Ages of family members

In 2007, a family of four with an income of less than **\$20,650** was considered poor.

In 2008, a family of four with an income of less than **\$21,200** was considered poor.

Prepared by: Center on Urban Poverty and Community Development,
Mandel School of Applied Social Sciences, Case Western Reserve University

Percent of Persons in Poverty Selected Big Cities, 2004 - 2007

Percent of People Living Below the Poverty Level for Selected Places, 2004 - 2007

Place	Poverty Rate, (Confidence Interval), 2004	Rank, 2004	Poverty Rate, (Confidence Interval), 2005	Rank, 2005	Poverty Rate, (Confidence Interval), 2006	Rank, 2006	Poverty Rate, (Confidence Interval), 2007	Rank, 2007
Detroit, MI	33.6 (30.1, 37.1)	1	31.4 (29.4, 33.4)	2	32.5 (30.7, 34.3)	1	33.8 (32.4, 35.2)	1
Cleveland, OH	23.2 (19.4, 27.0)	12	32.4 (30.2, 34.6)	1	27.0 (25.2, 28.8)	4	29.5 (27.4, 31.6)	2
Buffalo, NY	25.9 (21.2, 30.6)	8	26.9 (24.1, 29.7)	5	29.9 (27.3, 32.5)	2	28.7 (26.2, 31.2)	3
El Paso, TX	28.8 (25.1, 32.5)	2	27.2 (25.0, 29.4)	4	26.4 (24.6, 28.2)	7	27.4 (25.6, 29.2)	4
Memphis, TN	24.6 (21.6, 27.6)	10	23.6 (21.7, 25.5)	13	23.5 (21.7, 25.3)	12	26.2 (24.3, 28.1)	5
Miami, FL	28.3 (23.3, 33.3)	3	28.3 (25.9, 30.7)	3	26.9 (24.6, 29.2)	5	25.5 (23.3, 27.7)	6
Milwaukee, WI	26.0 (22.8, 29.2)	7	24.9 (23.3, 26.5)	9	26.2 (24.5, 27.9)	8	24.4 (23.0, 25.8)	7
Newark, NJ	28.1 (22.0, 34.2)	4	24.8 (21.7, 27.9)	9	24.2 (21.6, 26.8)	10	23.9 (21.3, 26.5)	8
Philadelphia, PA	24.9 (22.6, 27.2)	9	24.5 (23.2, 25.8)	10	25.1 (24.0, 26.2)	9	23.8 (22.5, 25.1)	9
Cincinnati, OH	19.6 (15.7, 23.5)	22	25.0 (22.3, 27.7)	8	27.8 (25.4, 30.2)	3	23.5 (21.4, 25.6)	10
.
.
Ft. Worth, TX	7.7 (5.4, 10.0)	69 of 70	6.3 (4.8, 7.8)	70 of 70	5.1 (3.8, 6.4)	70 of 70	5.9 (4.5, 7.3)	71 of 71

Source: U.S. Census Bureau, American Community Surveys in 2004, 2005, 2006 and 2007

Prepared by: Center on Urban Poverty and Community Development,
Mandel School of Applied Social Sciences, Case Western Reserve University

Percent of People Living in Poverty for Selected Counties, 2007

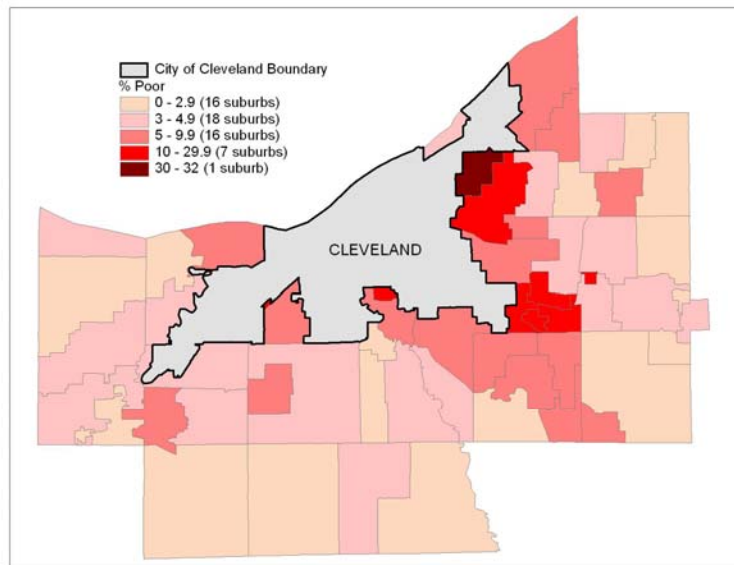
Percent of People Living Below the Poverty Level for Selected Counties, 2007

County	Poverty Rate, (Confidence Interval), 2007	Rank, 2007
Cameron County, TX	34.7 (32.2, 37.2)	1
Hidalgo County, TX	34.3 (31.7, 36.9)	2
El Paso County, TX	28.7 (27.0, 30.4)	3
Bronx County, NY	27.1 (26.0, 28.2)	4
Philadelphia County, PA	23.8 (22.5, 25.1)	5
Tulare County, CA	23.7 (21.4, 26.0)	6
Caddo Parish, LA	23.5 (20.9, 26.1)	7
St. Louis city, MO	22.4 (20.4, 24.4)	8
Kings County, NY	21.9 (21.1, 22.8)	9
Mobile County, AL	21.1 (19.2, 23.0)	10
.	.	.
.	.	.
.	.	.
Pulaski County, AR	15.5 (13.9, 17.1)	40
Cuyahoga County, OH	15.5 (14.7, 16.3)	40
.	.	.
.	.	.
Douglas County, CO	1.8 (1.2, 2.4)	247 of 247

Source: U.S. Census Bureau, 2007 American Community Survey

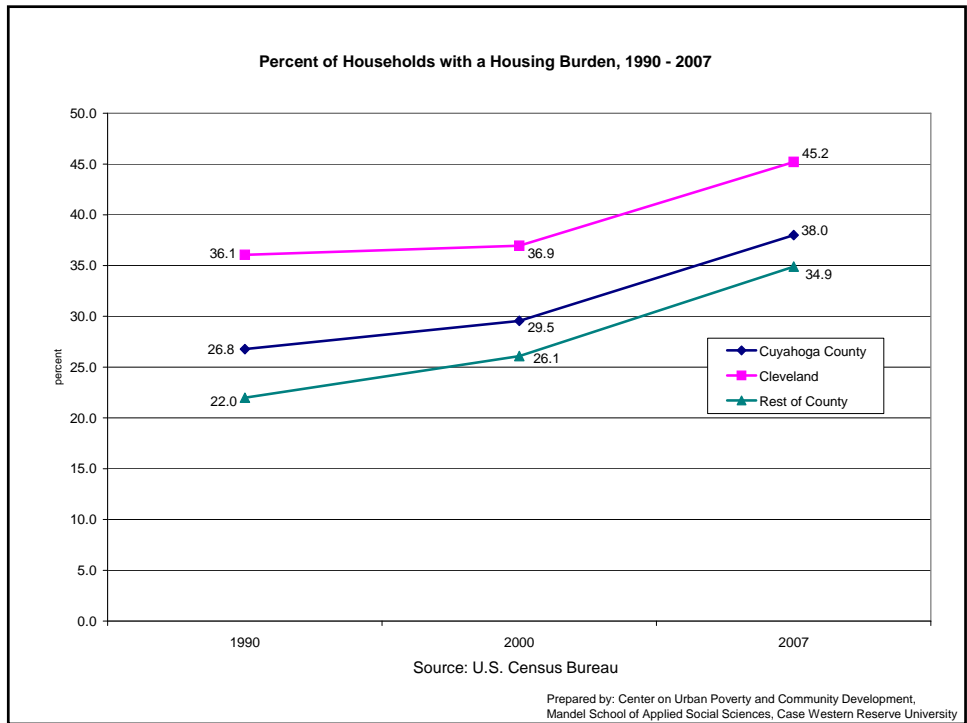
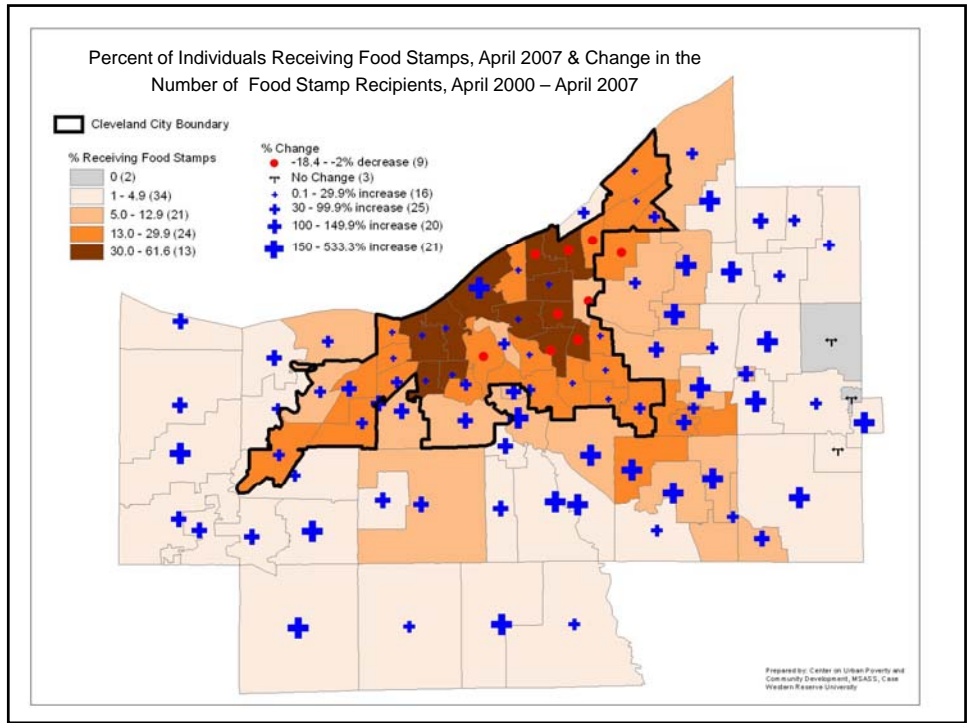
Prepared by: Center on Urban Poverty and Community Development, Mandel School of Applied Social Sciences, Case Western Reserve University

Suburban Poverty Rates in Cuyahoga County, 2000

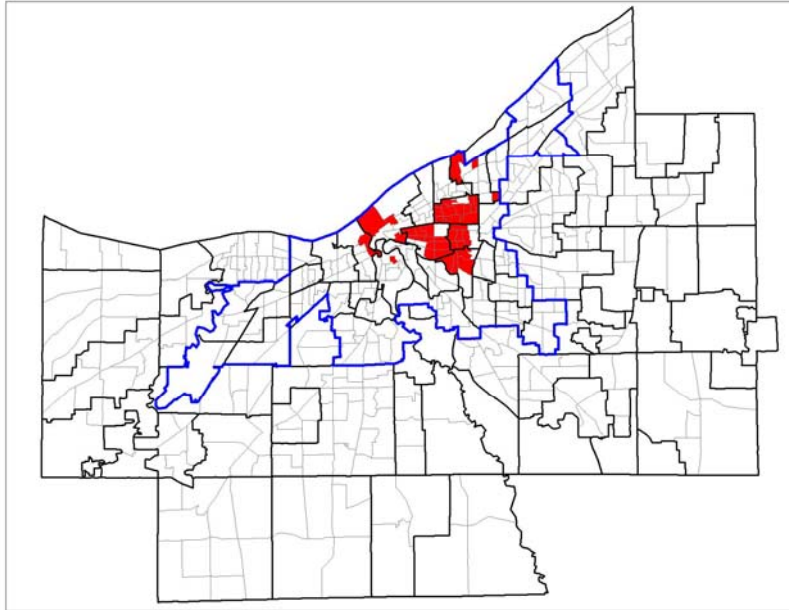


Source: Center on Urban Poverty and Community Development analysis of Census 2000 SF3 data

Prepared by: Center on Urban Poverty and Community Development, Mandel School of Applied Social Sciences, Case Western Reserve University

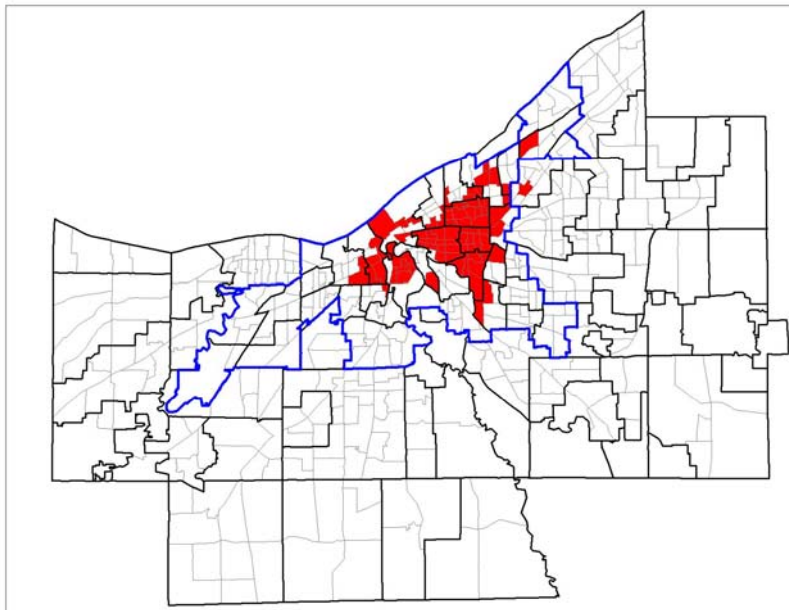


Concentrated Poverty in High Poverty Tracts, 1970



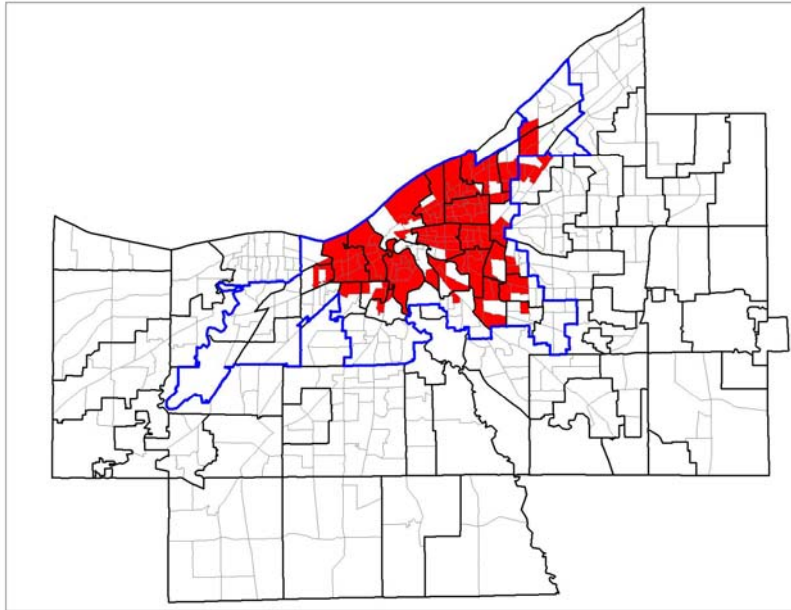
Prepared by: Center on Urban Poverty and Community Development, MSASS, Case Western Reserve University

Concentrated Poverty in High Poverty Tracts, 1980



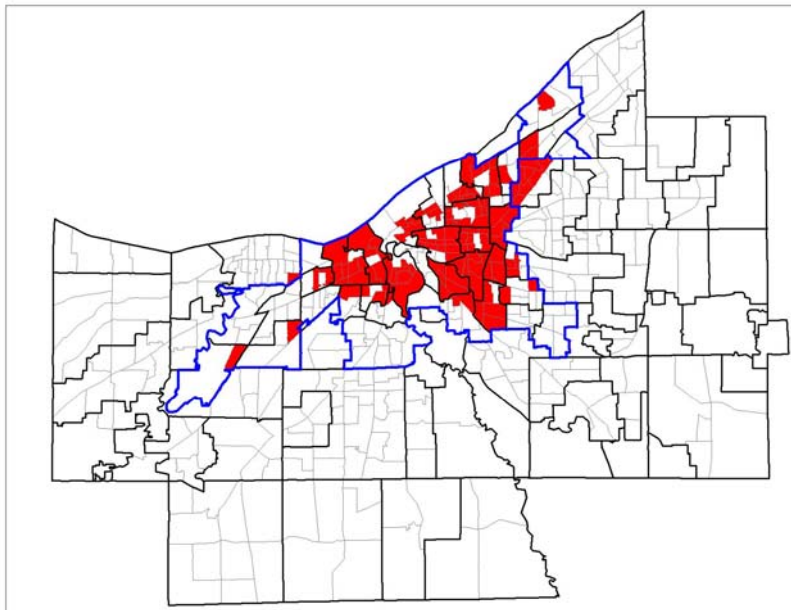
Prepared by: Center on Urban Poverty and Community Development, MSASS, Case Western Reserve University

Concentrated Poverty in High Poverty Tracts, 1990



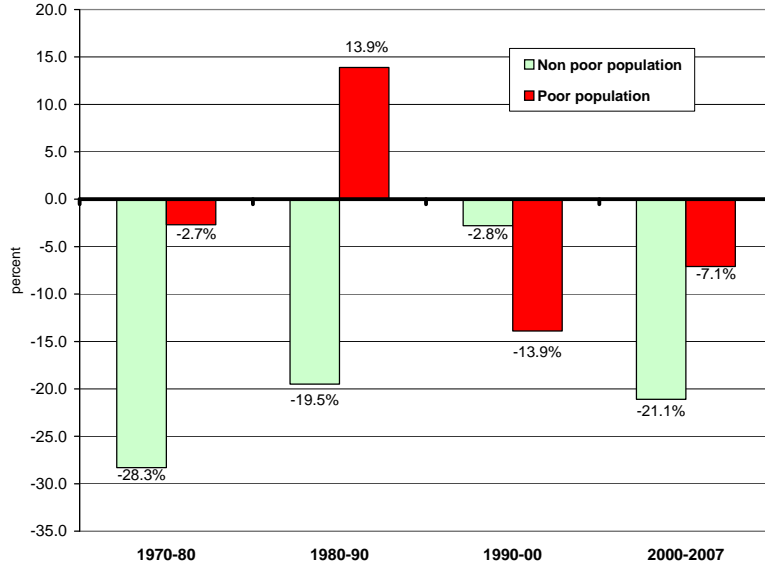
Prepared by: Center on Urban Poverty and Community Development, MSASS, Case Western Reserve University

Concentrated Poverty in High Poverty Tracts, 2000



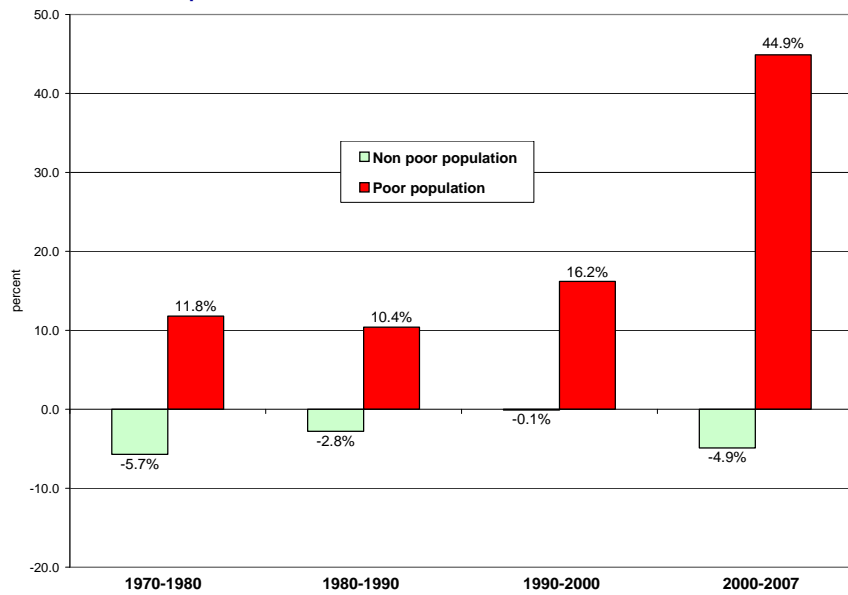
Prepared by: Center on Urban Poverty and Community Development, MSASS, Case Western Reserve University

Percent Change in Poor and Non Poor Population in Cleveland, 1970 - 2007



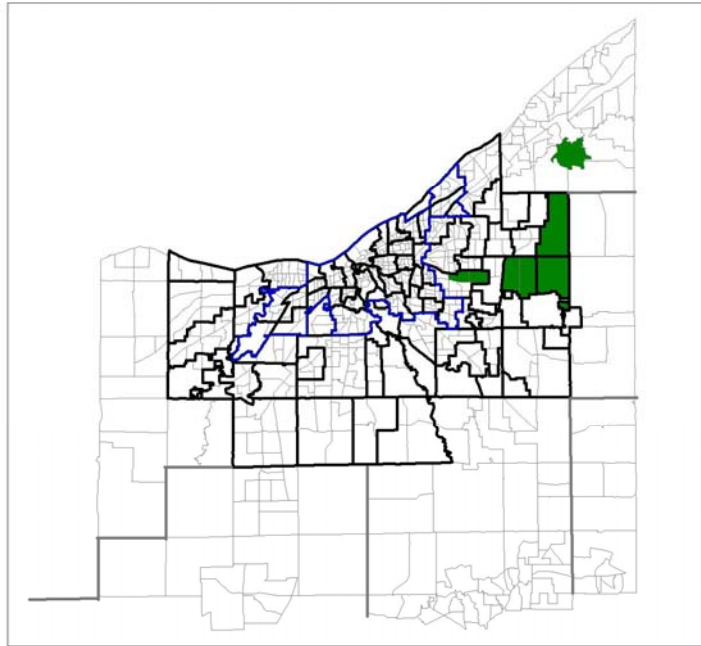
Source: Center on Urban Poverty and Community Development analysis of data from the Neighborhood Change Database (NCDB) and American Community Surveys

Percent Change in Poor and Non Poor Population in Suburbs, 1970 - 2007



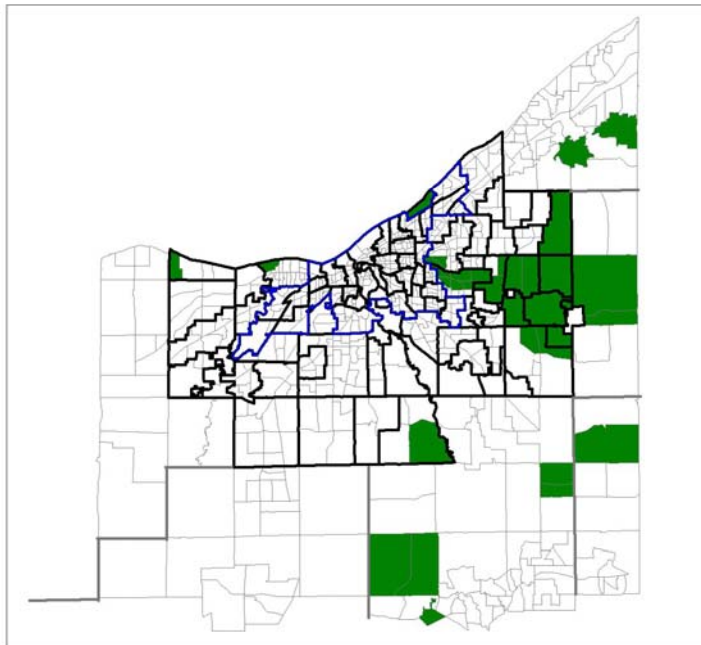
Source: Center on Urban Poverty and Community Development analysis of data from the Neighborhood Change Database (NCDB) and American Community Surveys

Concentrated Affluence in Extreme Affluence Tracts, 1980



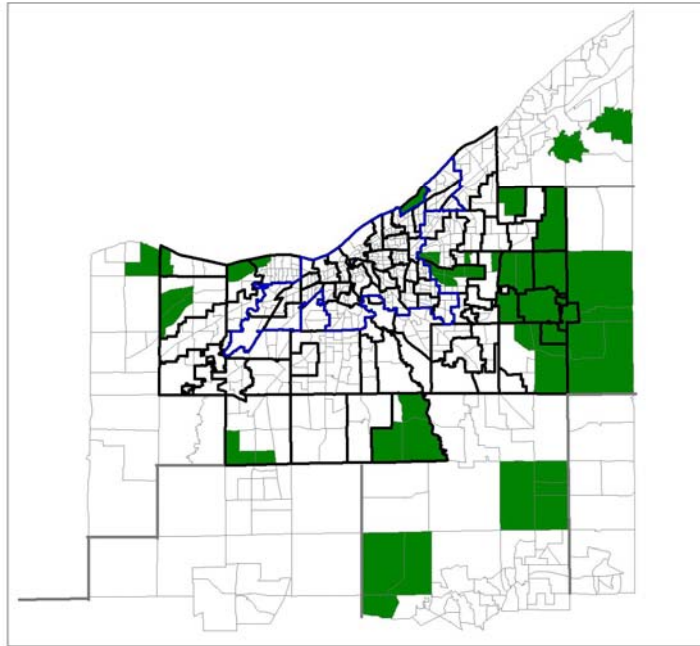
Prepared by: Center on Urban Poverty and Community Development, MSASS, Case Western Reserve University

Concentrated Affluence in Extreme Affluence Tracts, 1990



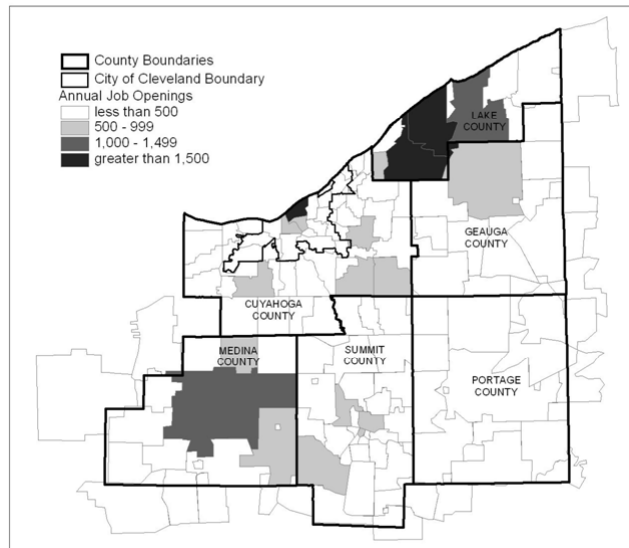
Prepared by: Center on Urban Poverty and Community Development, MSASS, Case Western Reserve University

Concentrated Affluence in Extreme Affluence Tracts, 2000

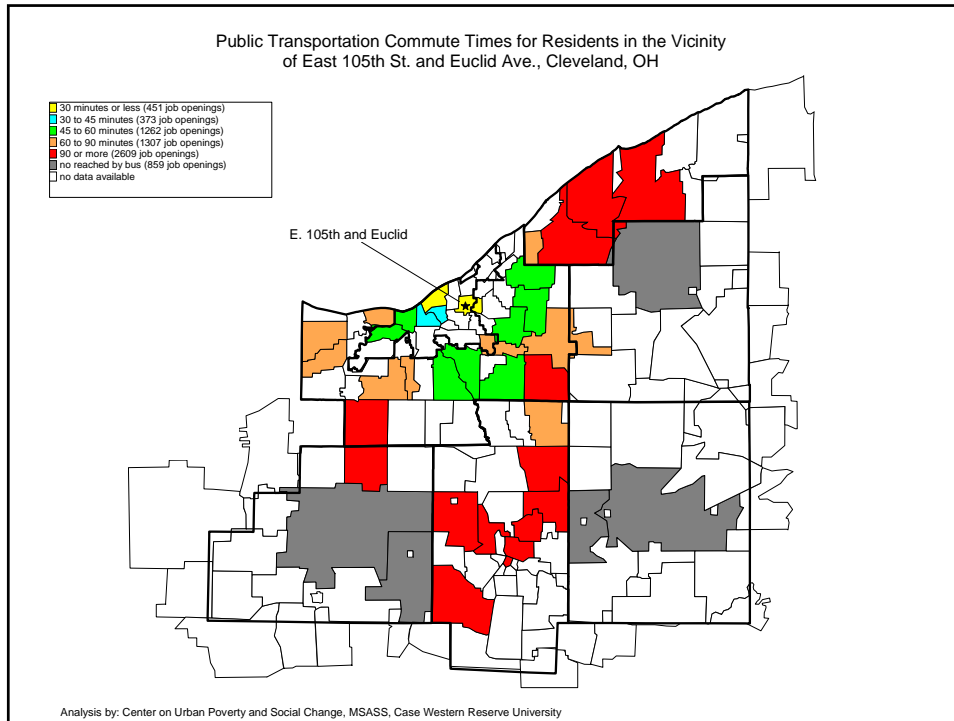


Prepared by: Center on Urban Poverty and Community Development, MSASS, Case Western Reserve University

**Annual Job Openings, 1995 – 2005
Cleveland–Akron Metropolitan Area by Zip Code**



Source: Prepared by the Center on Urban Poverty and Community Development based on analysis conducted by Leete and Baria (1995)



**Metropolitan Areas with Spatial Mismatch
between Blacks and Jobs, 2000**
(metropolitan areas with at least 500,00 people)

Rank	Metropolitan Area	Black Spatial Mismatch Index	Job Sprawl Index
1	Detroit, MI PMSA	71.4	92.4
2	Chicago, IL PMSA	69.5	77.0
3	Newark, NJ PMSA	65.2	77.0
4	Philadelphia, PA-NJ PMSA	64.2	80.9
5	St. Louis, MO-IL MSA	62.6	84.6
6	Cleveland-Lorain-Elyria, OH PMSA	62.0	75.4
7	Los Angeles-Long Beach, CA PMSA	61.6	87.1
8	Cincinnati, OH-KY-IN PMSA	58.8	75.4
9	San Diego, CA MSA	58.6	77.6
10	Indianapolis, IN MSA	58.3	74.9
.	.	.	.
.	.	.	.
.	.	.	.
94	Salt Lake City-Ogden, UT MSA	26.4	64.0

Source: Stoll (2005). Job Sprawl and the Spatial Mismatch between Blacks and Jobs. The Brookings Institution
Accessed online 3/14/05 at http://www.brookings.edu/metro/pubs/20050214_jobsprawl.htm

Racial Segregation for the Black Population in Large Metropolitan Areas, 2000

Metropolitan Area	Residential Segregation Rank, 2000
Milwaukee-Waukesha, WI PMSA	1
Detroit, MI PMSA	2
Cleveland-Lorain-Elyria, OH PMSA	3
St. Louis, MO-IL MSA	4
Newark, NJ PMSA	5
Cincinnati, OH-KY-IN PMSA	6
Buffalo-Niagara Falls, NY MSA	7
New York, NY PMSA	8
Chicago, IL PMSA	9
Philadelphia, PA-NJ PMSA	10
.	.
.	.
Orange County, CA PMSA	43

Source: Census 2000 Special Reports -- Racial and Ethnic Segregation in the United States: 1980 – 2000
Accessed online at <http://www.census.gov/prod/2002pubs/censr-3.pdf>, 3/14/05

Percent of People 25 and Older Who Have Completed High School for Selected Cities, 2007

Place	Percent (Confidence Interval), 2007	Rank, 2007
Plano, TX	92.3 (90.9, 93.7)	1
Virginia Beach, VA	92.2 (91.3, 93.1)	2
Anchorage, AK	91.8 (90.6, 93.0)	3
Seattle, WA	91.0 (90.0, 92.0)	4
Colorado Springs, CO	90.7 (89.5, 91.9)	5
Raleigh, NC	90.7 (89.4, 92.0)	5
.	.	.
Fresno, CA	74.9 (73.6, 76.2)	60
Bakersfield, CA	74.5 (72.4, 76.6)	61
Cleveland, OH	74.2 (72.9, 75.5)	62
El Paso, TX	73.2 (72.0, 74.4)	63
Houston, TX	73.1 (72.3, 73.9)	64
.	.	.
Santa Ana, CA	48.0 (46.0, 50.0)	71 of 71

Source: U.S. Census Bureau, 2007 American Community Survey

Prepared by: Center on Urban Poverty and Community Development,
Mandel School of Applied Social Sciences, Case Western Reserve University

Percent of People 25 and Older Who Have Completed High School for Selected Counties, 2007

County	Percent (Confidence Interval), 2007	Rank, 2007
Douglas County, CO	97.0 (96.3, 97.7)	1
Johnson County, KS	95.4 (94.8, 96.0)	2
Davis County, UT	94.7 (93.8, 95.6)	3
Hamilton County, IN	94.3 (93.4, 95.2)	4
Waukesha County, WI	94.1 (93.4, 94.8)	5
.	.	.
.	.	.
Bernalillo County, NM	85.6 (84.6, 86.6)	163
Cuyahoga County, OH	85.6 (85.0, 86.2)	163
St. Joseph County, IN	85.6 (84.2, 87.0)	163
Washoe County, NV	85.6 (84.3, 86.9)	163
.	.	.
.	.	.
Hidalgo County, TX	59.6 (57.8, 61.4)	247 of 247

Source: U.S. Census Bureau, 2007 American Community Survey

Prepared by: Center on Urban Poverty and Community Development,
Mandel School of Applied Social Sciences, Case Western Reserve University

Percent of People 25 and Older Who Have Completed a Bachelor's Degree for Selected Cities, 2007

Place	Percent (Confidence Interval), 2007	Rank, 2007
Plano, TX	53.6 (51.6, 55.6)	1
Seattle, WA	53.5 (52.2, 54.8)	2
San Francisco, CA	49.9 (48.8, 51.0)	3
Washington DC	47.5 (46.3, 48.7)	4
Raleigh, NC	46.9 (45.1, 48.7)	5
.	.	.
.	.	.
Toledo, OH	17.3 (15.8, 18.8)	66
Stockton, CA	16.6 (14.9, 18.3)	67
Cleveland, OH	13.0 (11.9, 14.1)	68
Santa Ana, CA	11.9 (10.9, 12.9)	69
Detroit, MI	11.8 (11.2, 12.4)	70
Newark, NJ	11.6 (10.1, 13.1)	71 of 71

Source: U.S. Census Bureau, 2007 American Community Survey

Prepared by: Center on Urban Poverty and Community Development,
Mandel School of Applied Social Sciences, Case Western Reserve University

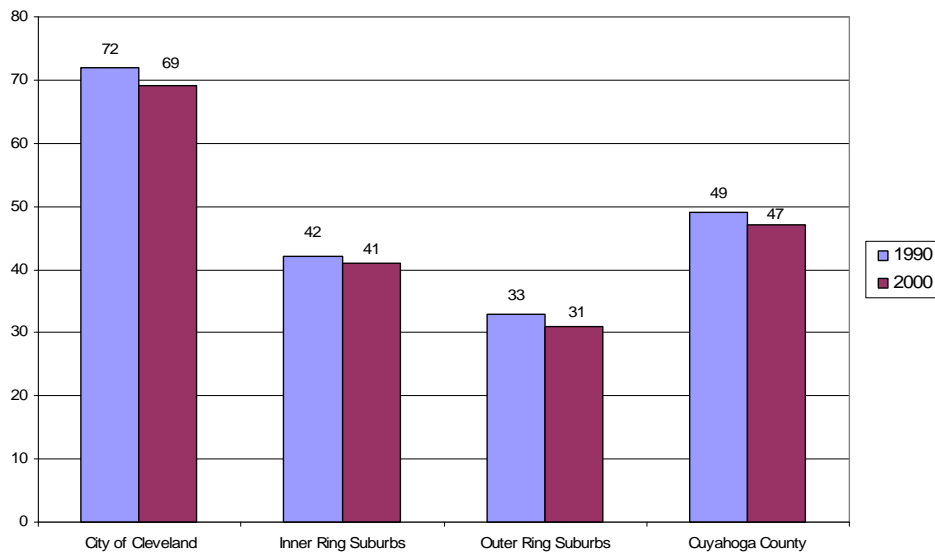
Percent of People 25 and Older Who Have Completed a Bachelor's Degree for Selected Counties, 2007

Place	Percent (Confidence Interval), 2007	Rank, 2007
Fairfax County, VA	59.0 (57.9, 60.1)	1
Montgomery County, MD	57.4 (56.2, 58.6)	2
New York County, NY	57.0 (56.1, 57.9)	3
Loudon County, VA	56.4 (54.1, 58.7)	4
Howard County, MD	55.6 (53.3, 57.9)	5
.	.	.
Jefferson County, KY	27.8 (26.9, 28.7)	149
Greene County, MO	27.8 (26.1, 29.5)	149
Richmond County, NY	27.8 (26.2, 29.4)	149
Cuyahoga County, OH	27.8 (27.0, 28.6)	149
.	.	.
Tulare County, CA	12.7 (11.5, 13.9)	247 of 247

Source: U.S. Census Bureau, 2007 American Community Survey

Prepared by: Center on Urban Poverty and Community Development,
Mandel School of Applied Social Sciences, Case Western Reserve University

Percent at Level 1 or Level 2 Literacy, 1990 vs. 2000



Prepared by: Center on Urban Poverty and Community Development,
Mandel School of Applied Social Sciences, Case Western Reserve University



Investing in Social Capital

Community development creates more stable and mixed income neighborhoods.

Community building strengthens networks and relationships within and between neighborhoods.

Civic society engages people and builds trust.

Social control promotes order and enables goal achievement.

Prepared by: Center on Urban Poverty and Community Development,
Mandel School of Applied Social Sciences, Case Western Reserve University



Investing in Economic Opportunities

Inclusionary housing development allows lower skill workers to live near jobs.

Regional economic development reduces non productive competition and promotes winners.

Bridges to work programs overcome the spatial and racial divide.

Prepared by: Center on Urban Poverty and Community Development,
Mandel School of Applied Social Sciences, Case Western Reserve University



Investing in Human Capital

Early Childhood Programs for at-risk children pay off ten fold

- High quality early care settings
- Home visiting and parenting programs from birth to three
- Universal preschool of high quality

Healthy births and newborn home visits to reach families early

Prepared by: Center on Urban Poverty and Community Development,
Mandel School of Applied Social Sciences, Case Western Reserve University



Investing in Human Capital (cont.)

School based compensatory programs are less effective when they do not build on successful early development.

Supportive services for parents and families, particularly those whose needs are not well met by general programs

Adult job education and training can raise employment rates but wages remain low

Attract and retain educated workers and invest in their continued development

Prepared by: Center on Urban Poverty and Community Development,
Mandel School of Applied Social Sciences, Case Western Reserve University



Conclusions

Cleveland region faces a number of challenges.

Number 2 ranking in poverty resulted from 40 years of change.

Investment in human and social capital are essential to rebuilding the opportunity structure of the region.

Given the enormity of the problem, must adopt strategies with the greatest promise.

Prepared by: Center on Urban Poverty and Community Development,
Mandel School of Applied Social Sciences, Case Western Reserve University



<http://povertycenter.case.edu/>

Prepared by: Center on Urban Poverty and Community Development,
Mandel School of Applied Social Sciences, Case Western Reserve University

The Northeast Ohio Community and Neighborhood Data for Organizing, NEO CANDO, is a regionally centered, constantly evolving, web-based information technology tool designed to inform public and private investment in neighborhoods - the building blocks of a successful region. NEO CANDO is maintained by the staff of the Center on Urban Poverty and Community Development, located in the Mandel School of Applied Social Sciences.

The data system allows users to extract and map data across geography, time, and data source. Data are available at many geographic levels, including the parcel, census block, census tract, neighborhood, city, and region. Users can query the system to meet specific criteria and map, chart, export and display results.

GOALS

Impact on Community

Bring reality and rationality to decision making process.

Promote informed social and economic development.

Lower the cost of planning, project development, and strategic work that public and private investors employ to undertake projects.

Data Acquisition and Outreach

Establish more data partnerships with government, academic, and nonprofit organizations.

Data Acquisition Portal—online survey tool.

Real-time data served directly to/from data providers.

Outreach and Technical Support

Train users to utilize the vast amounts of available data, and find more effective meaning in the data.

Promote communication that updates current users and engages new ones.

Continue offering training courses that appeal to broad range of users.

KEY FUNCTIONALITY

Flexible Geography

NEO CANDO allows user to select areas of interest. Users can drill down from higher level geographies in order to examine trends over time. Locally defined geographies make it easy for the user to find data by ward, CDC service area, planning district, and other special geographies.

Integrated Interactive Mapping

NEO CANDO users have the option of using the interactive mapping tool to display their data in a visual representation. The mapping function allows users to define geographies, change the appearance of their map, and save the map to their computer.

Extract across data source and time

Compare two or more variable, for example, crime rates and poverty rates, for a specific geography. NEO CANDO includes 15 years of historical data so the user can examine trends over time.

Filter parcel data to fit specific needs

Properties transferred in 2006 with values greater than \$100,000 in a neighborhood.

Display data results in various formats

Export to delimited text, pdf, excel, dbase/dbf, or SAS dataset.

Metadata driven using portal technology

NEO CANDO data is easily updated, meaning that users have the most up-to-date information available.

NEO CANDO

In Practice

EVALUATING SOCIAL CHANGE, DEVELOPING COMMUNITY

Longwood Plaza, a dilapidated shopping center located at the corner of East 40th Street and Community College Boulevard was a thriving open-air market of drug dealing. It was not uncommon to see people wearing bulletproof vests and carrying weapons in the area. The presence of this drug dealing activity made the corner one of the most dangerous areas in the city of Cleveland.

Another problem facing residents of the neighborhood was the lack of nearby shopping centers. Residents were forced to travel more than two miles in order to buy groceries. Many residents in the neighborhood lack personal vehicles, making it even more difficult to buy and bring home affordable groceries, as they were forced to use public transportation.

A redevelopment project of the corner was undertaken by Burten Bell Carr Development and Neighborhood Progress Inc. as a means to eliminate blight, reduce crime, encourage investment in the neighborhood, and provide much needed assets to the neighborhood, including a grocery store, a bank, and various retail outlets. The project has successfully transformed the area which was once a source of danger and violence into an enormous asset which benefits residents of the neighborhood by providing nearby shopping, financial services, and a sense of community and safety.

Jeffrey Sugalski, a Real Estate Development Specialist at Burten Bell Carr Development, and his team from BBDC, submitted a grant proposal to the Dominion East Ohio's 12th Annual Community Impact Awards highlighting the impact that the new development has had on the neighborhood. The award program honors organizations which have made a significant impact on their community. The development of the Arbor Park Place retail was the first large-scale development in the neighborhood in over forty years.

In his proposal, Jeffrey used the social and economic indicators section of NEO CANDO to look at the amount of crime happening in the census block group around the new shopping center before and after the redevelopment project. He found that between 2002 and 2005, the illicit drug offenses resulting in arrest fell from 104 to 2. Similarly, he found that drug possession arrests fell from 91 to 2 during the same years.

In addition, Jeffrey cited crime data from NEO CANDO showing that both Part I crimes (homicide, rape, robbery, aggravated assault, burglary, larceny-theft, auto theft, and arson) decreased by 50 percent during the same period. Part II crimes (non-aggravated assault, forgery, fraud, embezzlement, receiving stolen property, vandalism, weapons violations, prostitution, drug violations, family offenses, disorderly conduct, kidnapping and other offenses not classified as Part I crimes) went from 193 in 2002 to 35 in 2005.

The use of NEO CANDO data in Jeffrey's proposal allowed him to pair reliable, factual data with what residents of the neighborhood had already witnessed. The neighborhood was a safer place to be following the development of Arbor Place Plaza.

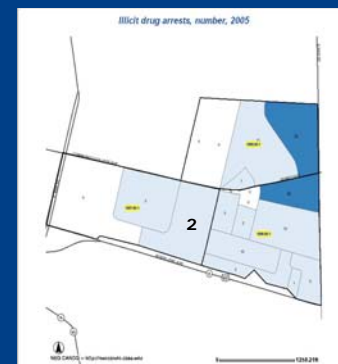
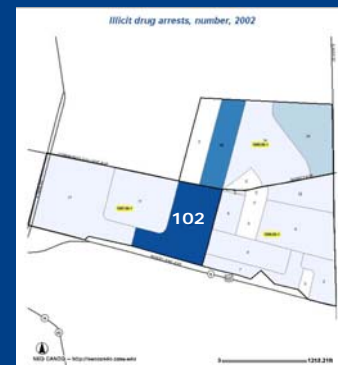
Jeffrey's proposal was awarded the top prize in the award contest, and Burten Bell Carr Development received \$20,000 (twice as much as any other recipient). In reviewing Jeffrey's proposal, the award funders stated that the inclusion of the data Jeffrey accessed through NEO CANDO was crucial to the organization's first place finish. The money will be used by the organization in another redevelopment project with the hopes of continuing its successful efforts to improve conditions in the Central neighborhood.

Jeffrey Sugalski



Burten Bell Carr Development

Changes in crime in census block 1097.00-1



Source: NEO CANDO, Center on Urban Poverty and Community Development, Mandel School of Applied Social Sciences, Case Western Reserve University