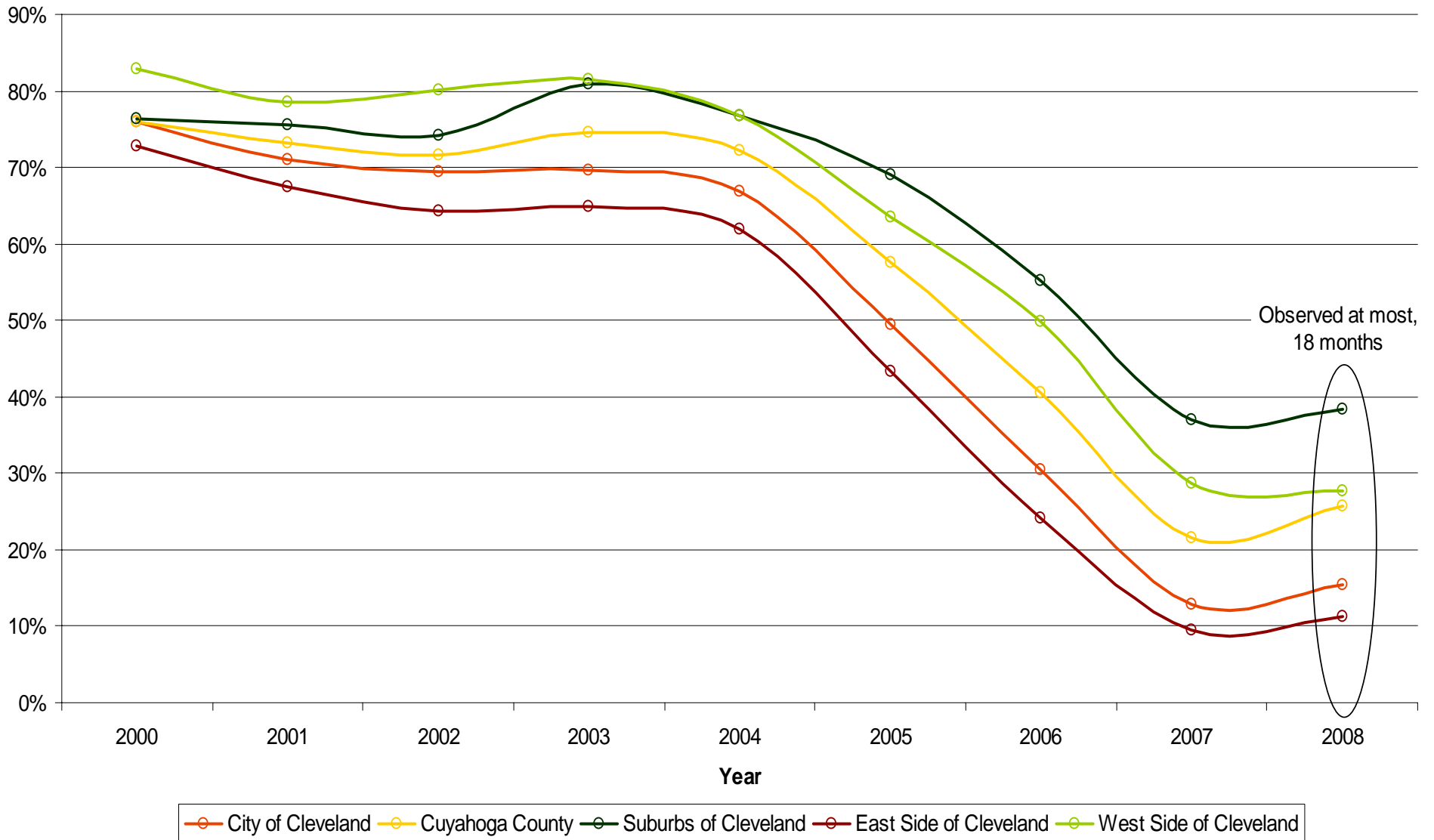
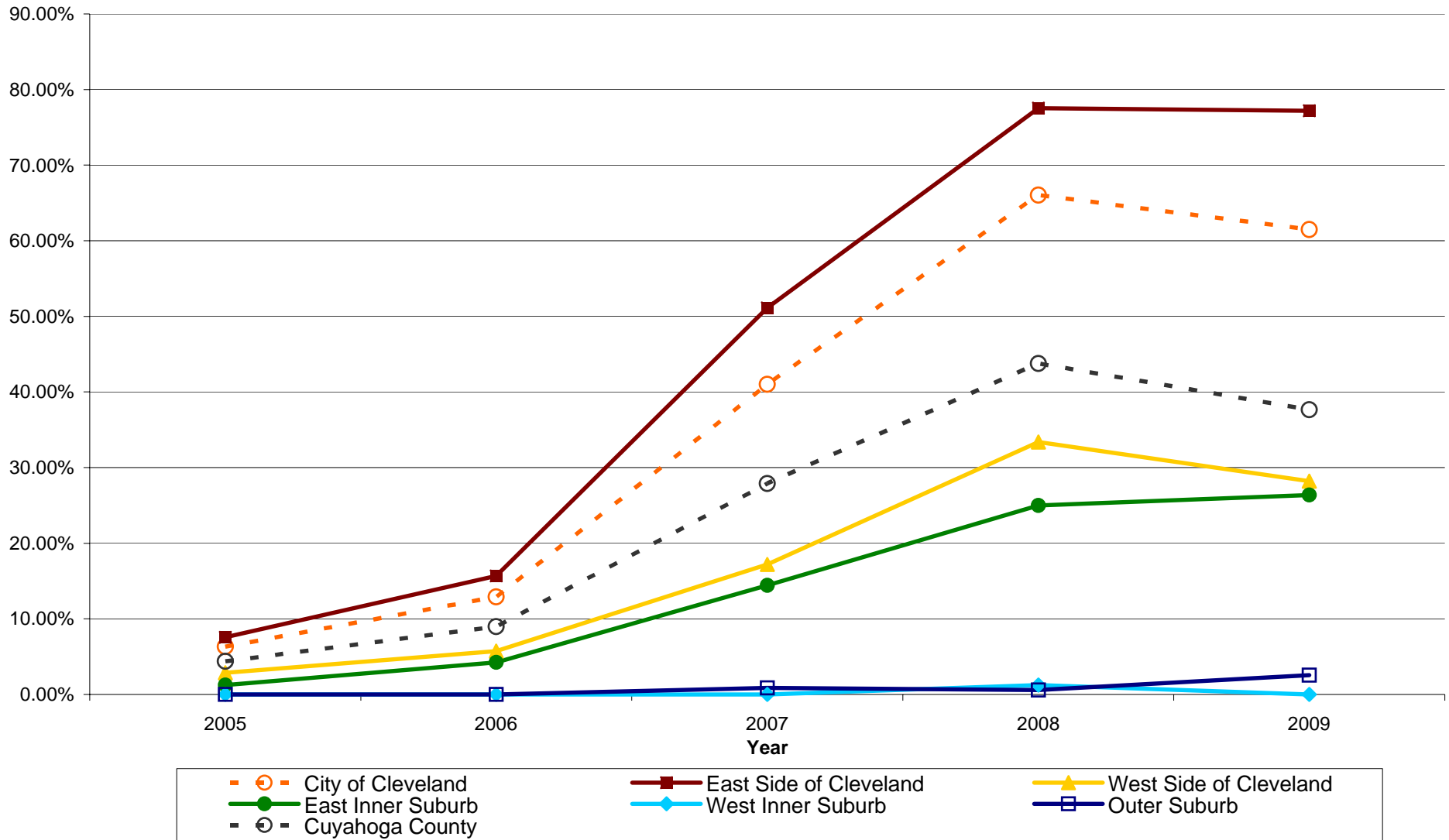


Median Ratio of Sales Price Sold out of REO within 2 years to Estimated Market Value (in 2008 dollars), (REO sales through June 2009)



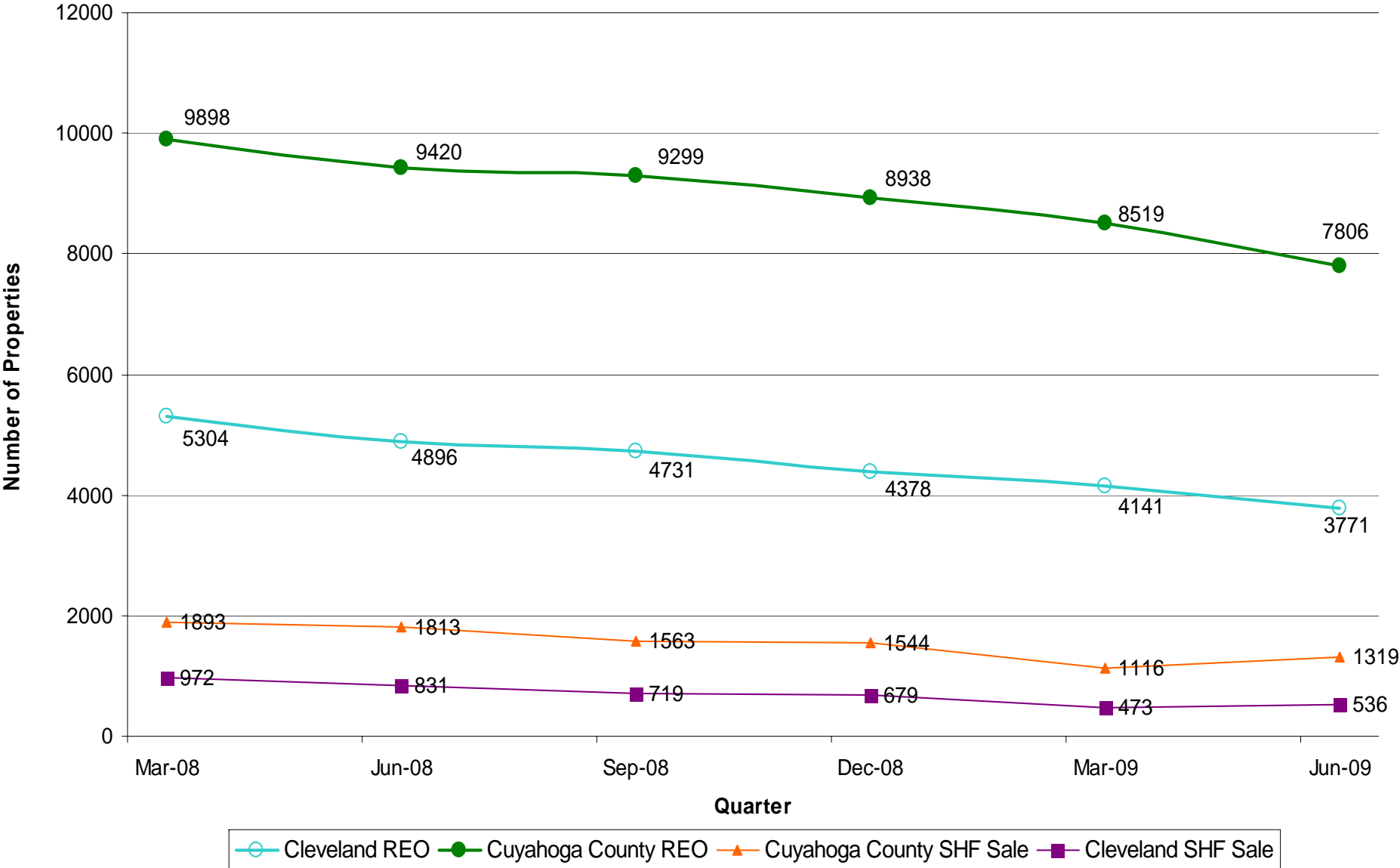
Prepared by: Center on Urban Poverty and Community Development, Mandel School of Applied Social Sciences, Case Western Reserve University
 Source: NEO CANDO (<http://neocando.case.edu>), Tabulation of Cuyahoga County Auditor Data

Percent of properties sold out REO <=\$10,000 through June, 2009



Prepared by: Center on Urban Poverty and Community Development, Mandel School of Applied Social Sciences, Case Western Reserve University
 Source: NEO CANDO (<http://neocando.case.edu>), Tabulation of Cuyahoga County Auditor Data

Properties in REO and Shf Sales, Quarterly, 2008-2009



Prepared by: Center on Urban Poverty and Community Development, Mandel School of Applied Social Sciences, Case Western Reserve University
 Source: NEO CANDO (<http://neocando.case.edu>), Tabulation of Cuyahoga County Auditor Data