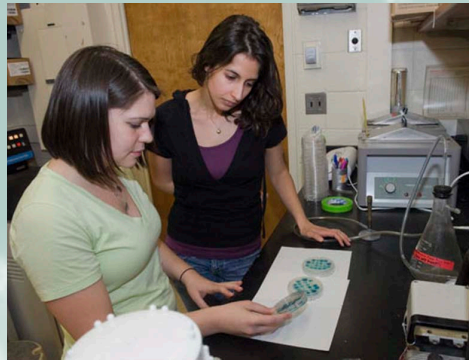


START YOUR RESEARCH CAREER WITH US!

Graduate student based research program with areas of expertise in molecular and cellular pharmacology, cancer biology and neurobiology.

Students receive a stipend and tuition for their entire graduate career.



RECENT PUBLICATIONS

R. Kang, J. Wan, P. Arstikaitis, H. Takahashi, K. Huang, A.O. Bailey, J.X. Thompson, A.F. Roth, R.C. Drisdell, R. Mastro, W.N. Green, J.R. Yates, III, **N.G. Davis**, A. El-Husseini, Neuronal palmitoyl-proteomics: Dynamic modulation of palmitoylation at the synapse. *Nature* (2009) **456** 904-909.

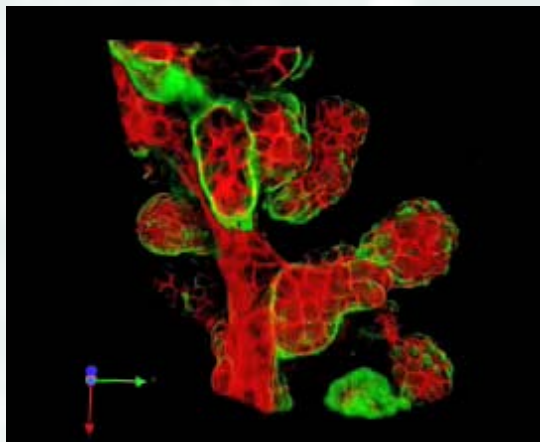
Jedezsko, C., Sameni, M., Olive, M.B., Moin, K. and **Sloane, B.F.**, Visualizing protease activity in living cells: from 2D to 4D. *Current Protocols Cell Biol.* (2008) **39** 4.20.1-4.20.15.

Chen N. Young, C.N., Koepke, J.I., Terlecky, L.J., Borkin, M.S., Savoy, L.B., and **Terlecky, S.R.** (2008) Reactive oxygen species in TNF- α -activated primary human keratinocytes: implications for psoriasis and inflammatory skin disease, *Journal of Investigative Dermatology* (2008) **128** 2606-2614.

J.W. Wojtkowiak, F. Fouad, D.T. LaLonde, R.A. Gibbs, J.J. Reiners Jr, R.F. Borch & **R.R. Mattingly**, Induction of apoptosis in Neurofibromatosis Type 1 malignant peripheral nerve sheath tumor cell lines by a combination of novel farnesyl transferase inhibitors and lovastatin. *J. Pharmacol. Exp. Ther.* (2008) **326** 1-11.

Hou Z and **Matherly LH**, Oligomeric structure of the human reduced folate carrier: identification of homo-oligomers and dominant-negative effects on carrier expression and function. *J Biol Chem.* (2009) **284** 3285-93.

Knight RA, Chen-Scarabelli C, Yuan Z, **McCauley RB**, Di Rezze J, Scarabelli GM, Townsend PA, Latchman D, Saravolatz L, Faggian G, Mazzucco A, Chowdrey HS, Stephanou A, **Scarabelli TM**. Cardiac release of urocortin precedes the occurrence of irreversible myocardial damage in the rat heart exposed to ischemia/reperfusion injury. *FEBS Lett.* (2008) **582** 984-90.



3D reconstruction of terminal lobular units formed by human breast epithelial cells and myoepithelial cells grown in coculture.

Red depicts actin cytoskeleton and green depicts laminin 5, a basement membrane protein.

[click image to play movie](#)